



## SonicWALL Email Security for the SMB

EMAIL SECURITY

**Comprehensive, Integrated and Easy-to-Use E-mail Security**

E-mail threats have transformed dramatically in recent years from a mere annoyance to a severe drain on business resources. Serving as conductors of spam, viruses, phishing and other harmful threats, e-mail-borne attacks are growing in sophistication resulting in considerable damages and extensive costs. While inbound e-mail threats are of great concern, best practices and regulatory requirements call for careful management of outbound e-mail, preventing unauthorized dissemination of private and confidential information.

Ideal for the small- to medium-sized business (SMB), SonicWALL Email Security is a self-running, self-updating solution, delivering powerful protection against spam, virus and phishing attacks in addition to preventing confidential information leaks and violation of internal e-mail policy or regulatory compliance laws. SonicWALL Email Security solutions provide powerful protection without complexity.

### Features and Benefits

**Award-winning anti-spam engine** coupled with end-to-end attack monitoring ensures the most effective and current protection from spam attacks.

**Corporate phishing protection** ensures that organizations are protected from identity theft. SonicWALL delivers the only solution that uniquely identifies phishing e-mails and enables administrators to handle these messages separately.

**Time Zero Virus Technology** protects customers from the time a virus outbreak occurs until the time a signature update is available. SonicWALL provides additional layers of protection by partnering with McAfee and Kaspersky Labs for signature updates.

**End-user spam management** allows easy delegation of spam management to end users, reducing false positives and lessening the load on IT. This enables organizations to handle the differing needs of its employees.

**DHA, DoS and zombie attack protection** combined with SonicWALL's anti-spam, anti-phishing and anti-virus capabilities provides robust solutions for stopping all e-mail threats. With an integrated LDAP/Exchange Accelerator, the security and performance of e-mail systems are never compromised.

**Inbound and outbound e-mail management capabilities** bi-directionally monitor content passing through the SMTP gateway. Inbound e-mail threats like spam, viruses and phishing attacks can be stopped before they invade the network while outbound e-mail content can be carefully managed, preventing confidential information leaks.

**Content compliance capabilities** help organizations adhere to regulatory and e-mail compliance requirements and enforce organizational e-mail policies. SonicWALL Email Security intelligently identifies e-mails that violate compliance policies, monitors and reports the problem and applies actions.

**Seamless LDAP integration** ensures that SonicWALL Email Security solutions automatically synchronize with directories for single sign-on and automatic management of e-mail addresses and accounts. Additionally, policies, users and groups can be managed based on existing LDAP information.

**Robust reporting** provides easily customizable, system-wide and granular reporting, including information on attack types, solution effectiveness and system performance.

**Rapid installation and ease-of-management** drastically reduces the burden on small businesses to implement and maintain an in-house e-mail security solution. Taking no more than an hour to install, and administration not exceeding 10 minutes a week, SonicWALL Email Security is the easiest yet most effective solution available.

■ Award-winning anti-spam

■ Corporate phishing protection

■ Time Zero Virus Technology

■ End-user spam management

■ DHA, DoS and zombie attack protection

■ Inbound and outbound e-mail management

■ Content compliance capabilities

■ Seamless LDAP integration

■ Robust reporting

■ Rapid installation and ease-of-management



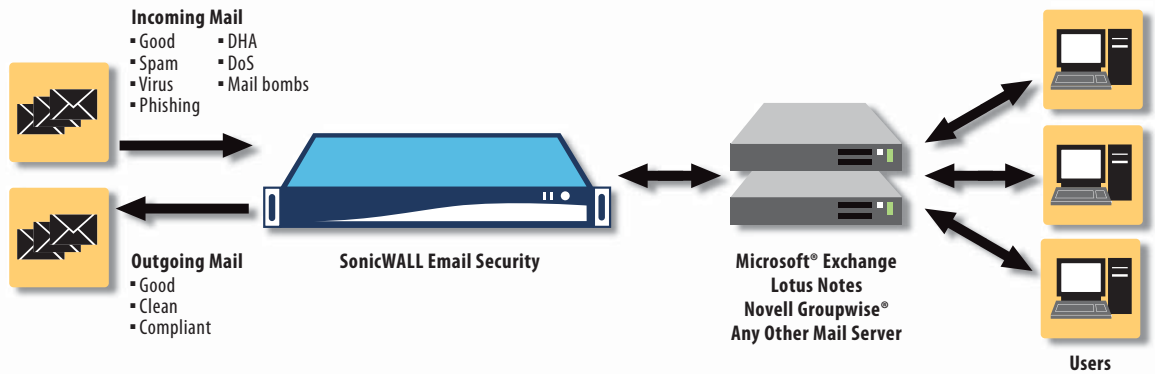
**Appliance and Software Solutions**

SonicWALL Email Security 200, 300, 400, and 500 appliances are easy-to-install, hardened SonicWALL OS-based solutions. SonicWALL Email Security Software is ideal for organizations that prefer a flexible solution that can be used with their existing hardware or deployed on their mail server.

**Deployment of Email Security**

**All-in-One Configuration**

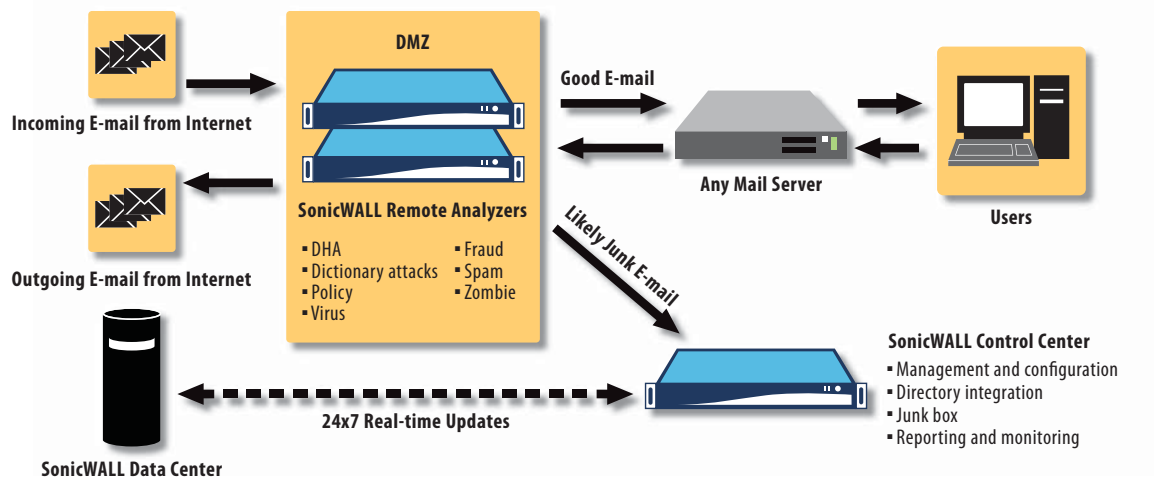
The easiest deployment is an all-in-one configuration where filtering and management take place on the same server.



*Powerful and  
easy-to-use  
e-mail threat  
protection*

**Split Network Architecture**

For load balancing and redundancy, split network enables companies to filter at the network perimeter while providing centralized control.



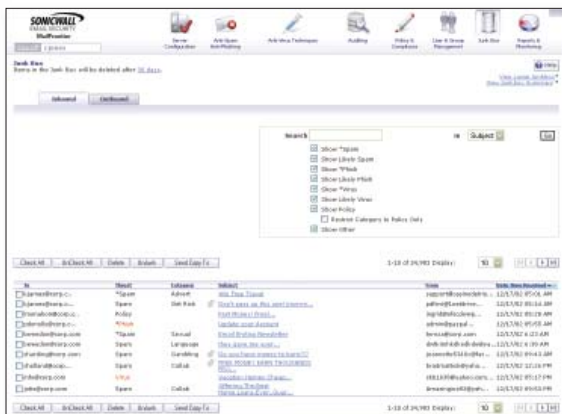
## The SonicWALL Difference

**Best Protection:** SonicWALL Email Security provides the highest level of protection from both inbound and outbound e-mail threats by leveraging a unique end-to-end e-mail attack monitoring system.

- Anti-spam
- Anti-phishing
- Anti-virus
- DHA and DoS Protection
- Internal Zombie Detection
- Time Zero Virus Protection
- Policy Management
- Compliance Tools
- Blended Threats

**Effortless Control:** SonicWALL ensures simple configuration, easy customization and automated maintenance, all through an easy-to-use, Web-based administrative interface.

- Quick configuration in less than an hour
- Auto-update of all data and software
- LDAP integration for authentication and user management
- Streamlined LDAP-based groups, end user management and delegation of administration
- Personalized end-user quarantine and settings
- Easy auditing of any e-mail that has been routed through the systems
- Detailed reporting including information on attack types, solution effectiveness and system performance



Junk Box Summary



Reports and Monitoring

**High Performance:** Using its unique pre-emptive scanning Mail Transfer Agent (MTA), SonicWALL Email Security offers breakthrough message analysis. With SonicWALL Email Security, fewer machines are required to process the e-mail load, resulting in reduced management complexity and lower costs.

# Specifications

## SonicWALL Email Security



### SonicWALL Email Security

SonicWALL Email Security 200  
01-SSC-6600

SonicWALL Email Security 300  
01-SSC-6601

SonicWALL Email Security 400  
01-SSC-6602

SonicWALL Email Security 500  
01-SSC-6603

SonicWALL Email Security Software  
(50 Users)  
01-SSC-6630

SonicWALL Email Security Software  
(100 Users)  
01-SSC-6631

SonicWALL Email Security Software  
(250 Users)  
01-SSC-6632

SonicWALL Email Security Software-  
(1000 Users)  
01-SSC-6633

SonicWALL Email Protection  
Subscription and 8x5 Support-1 year  
Model 200, 50 Users Software  
01-SSC-6660

SonicWALL Email Protection  
Subscription and 8x5 Support-1 year  
Model 300, 100 Users Software  
01-SSC-6661

SonicWALL Email Protection  
Subscription and 8x5 Support-1 year  
Model 400, 250 Users Software  
01-SSC-6662

SonicWALL Email Protection  
Subscription and 8x5 Support-1 year  
Model 500, 1000 Users Software  
01-SSC-6663

(See [www.sonicwall.com](http://www.sonicwall.com) for 24x7 support SKUs)

Email Security Appliances	SMB				Enterprise	
	200	300	400	500	6000	8000
<b>Users Licensed</b>	50	100	250	1000	5000	5000+
<b>Domains</b>	Unlimited					
<b>Operating System</b>	Hardened SonicWALL Linux OS Appliance					
<b>Rackmount Chassis</b>	1U Mini	1U Mini	1U Mini	1U Mini	1U Mini	1U Fullsize
<b>CPU</b>	2.66GHz	2.66GHz	2.66GHz	2.66GHz	3.2GHz	2 x 3.2 GHz
<b>RAM</b>	1 GB	1 GB	1 GB	1 GB	2 GB	2 GB
<b>Hard drive</b>	80 GB	80 GB	2 x 80 GB	2 x 80 GB	2 x 160 GB	2 x 146 GB SCSI
<b>Redundant Disk Array (RAID)</b>			X	X	X	X
<b>Hot Swappable Drives</b>						X
<b>Redundant Power Supply</b>						X
<b>Dimensions</b>	16.8 x 14.0 x 1.7 in 42.67 x 35.56 x 4.32 cm	16.8 x 14.0 x 1.7 in 42.67 x 35.56 x 4.32 cm	16.8 x 14.0 x 1.7 in 42.67 x 35.56 x 4.32 cm	16.8 x 14.0 x 1.7 in 42.67 x 35.56 x 4.32 cm	16.8 x 14.0 x 1.7 in 42.67 x 35.56 x 4.32 cm	39.0 x 24.0 x 10.0 in 99.06 x 60.96 x 25.40 cm
<b>Weight</b>	18 lbs 8.16 kg	18 lbs 8.16 kg	19 lbs 8.62 kg	19 lbs 8.62 kg	19 lbs 8.62 kg	48 lbs 21.77 kg
<b>WEEE Weight</b>	13 lbs 5.90 kg	13 lbs 5.90 kg	14 lbs 6.35 kg	14 lbs 6.35 kg	14 lbs 6.35 kg	41 lbs 18.60 kg
Email Security Software	50 User	100 User	250 User	1000 User	5000 User	5000+ User
<b>Users Licensed</b>	50	100	250	1000	5000	5000+
<b>Domains</b>	Unlimited					
<b>Operating System</b>	Runs on Microsoft Windows 2000 Server or Microsoft Windows 2003 Server					
<b>CPU</b>	2.66 GHz minimum configuration					
<b>RAM</b>	1 GB minimum configuration					
<b>Hard drive</b>	40 GB minimum configuration					
Appliance and Software Features						
Threat Protection						
Inbound and outbound e-mail protection	Yes	Yes	Yes	Yes	Yes	Yes
Anti-spam effectiveness	98%+	98%+	98%+	98%+	98%+	98%+
Anti-phishing identified separately	Yes	Yes	Yes	Yes	Yes	Yes
Anti-Virus: Dual-layer Commercial	Yes	Yes	Yes	Yes	Yes	Yes
Time Zero Virus Protection	Yes	Yes	Yes	Yes	Yes	Yes
DHA, DoS, Other Attack Protection	Yes	Yes	Yes	Yes	Yes	Yes
LDAP/Exchange Accelerator	Yes	Yes	Yes	Yes	Yes	Yes
Compliance Subscription						
Robust Policy Management	Yes	Yes	Yes	Yes	Yes	Yes
Attachment Scanning	Yes	Yes	Yes	Yes	Yes	Yes
Dictionaries	Yes	Yes	Yes	Yes	Yes	Yes
Approval Boxes/Workflow	Yes	Yes	Yes	Yes	Yes	Yes
Installation and Management						
Installation	< 1 hour	< 1 hour	< 1 hour	< 1 hour	< 1 hour	< 1 hour
Management per week	< 10 min	< 10 min	< 10 min	< 10 min	< 10 min	< 10 min
Compatible with all email servers	Yes	Yes	Yes	Yes	Yes	Yes
Single sign-on	Yes	Yes	Yes	Yes	Yes	Yes
Group and user management	Yes	Yes	Yes	Yes	Yes	Yes
End user quarantine and settings	Yes	Yes	Yes	Yes	Yes	Yes
Junk Box Summary actionable email	Yes	Yes	Yes	Yes	Yes	Yes
Monitoring, Reporting and Log Management	Yes	Yes	Yes	Yes	Yes	Yes
Clustering and Remote Clustering	Yes	Yes	Yes	Yes	Yes	Yes

### SonicWALL, Inc.

1143 Borregas Avenue  
Sunnyvale CA 94089-1306

T +1 408.745.9600  
F +1 408.745.9300

[www.sonicwall.com](http://www.sonicwall.com)

